

Sabroe SMC 112 L MK2

Specifications

Brand	Sabroe
Type	SMC 112 L MK2
Refrigerant	NH 3 (ammonia)
Refrigerant type	R717
kW at +10°C/+40°C	1083,5
kW at 0°C/+40°C	715,1
kW at -5°C/+40°C	569,0
kW at -10°C/+40°C	444,6
Electromotor Specs	90 kW - 984 RPM
Capacity Control	✓
On steel base frame	✓
Pressure safety switches	✓
Hp/Lp/Op	
Pressure gauges	✓
Hp/Lp/Op	
Oil separator	✓
m3 / h	568
Sizes	2750x1100x1650 mm (LxWxH)
Stock	1

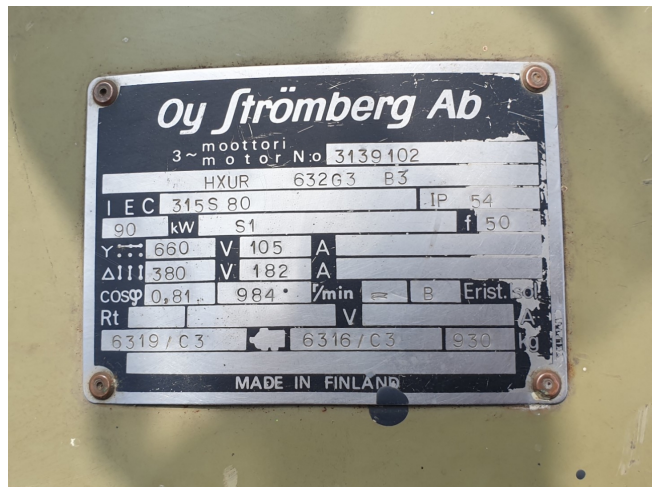
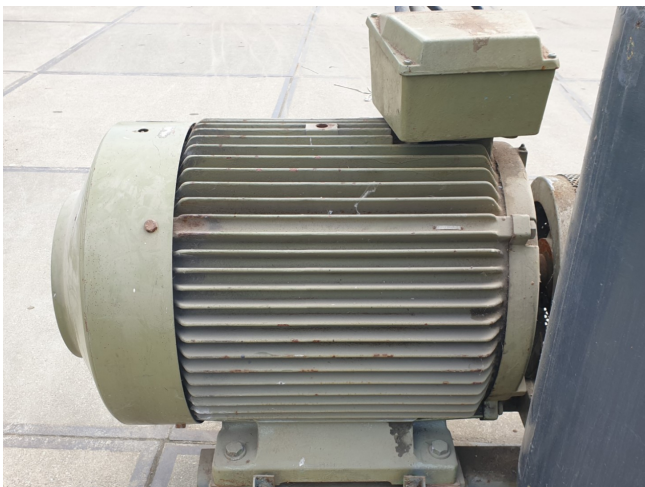
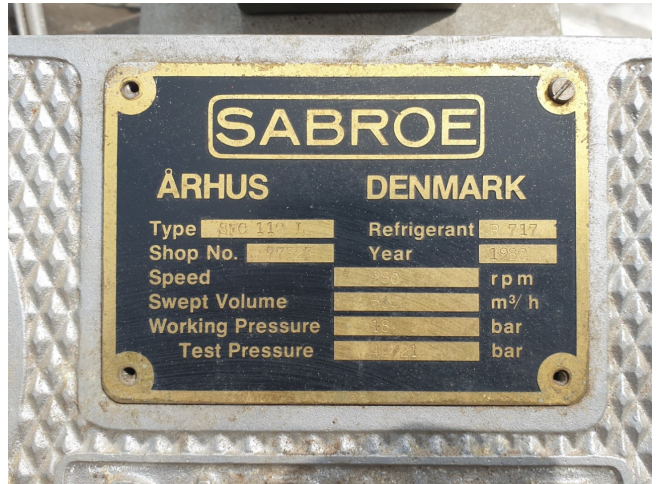
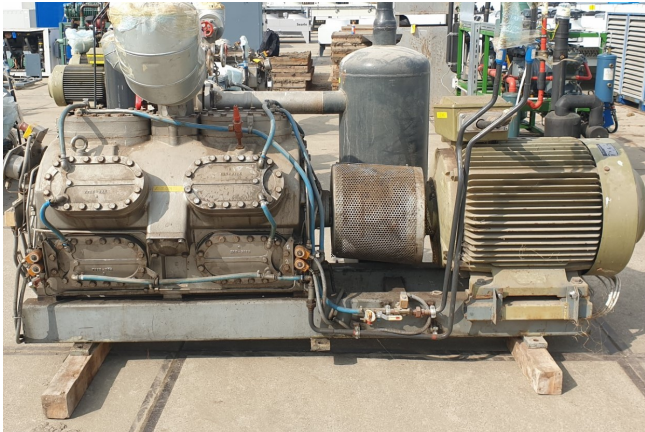


Description

Used Sabroe SMC 112 L MK2

Used Sabroe SMC 112 L compressor unit. This compressor unit has the following components: Sabroe SMC 112 L MK2 reciprocating compressor, Strömberg Ab HXUR 632G3 B3 (90 kW at 984 RPM) electromotor. Oil separator 150 liter. Pressure safety switches and gauges. Cooling capacity based on booster conditions with 90 kW electromotor is -40°C/-10°C - 132,5 kW and -30°C/0°C - 226,1 kW. Compressor can run as single cooling purpose condition with another capacity electromotor.

*Why choose for HOSBV? Were not only the largest used refrigeration specialist in Europe, but also, we deliver all equipment including an extensive test, warranty and industrial cleaning. *If requested we are happy to arrange your logistics.





VALMISTAJA
AWE OY A. W. ENBOM AB HELSINKI

REGISTERIKILPI

REK. N.O. **A-56450** VALM. VUOSI **1982**

VALM. N.O. **P-21391**

LAITE N.O. **R**

SUURIN SALL. KÄYTTÖP. **18,1** bar

KORKEIN SALLITTU SISÄLLÖN LÄMPÖTILA **150** °C

ALIN SALLITTU SISÄLLÖN LÄMPÖTILA **0** °C

TEHO _____ MW

TILAVUUS **0,15** m³

VUOSI	TARKASTUS		L K	SUURIN SALLITTU KÄYTTÖPAINEN bar
	KK	PV		
1982	11	11	L K	18,1

LÄMPÖTEKN. MIT. _____ °C

PAINEHÄVIÖ _____ kPa

AINE **NH₃**

MALLI N.O. **AWE 4"**

8